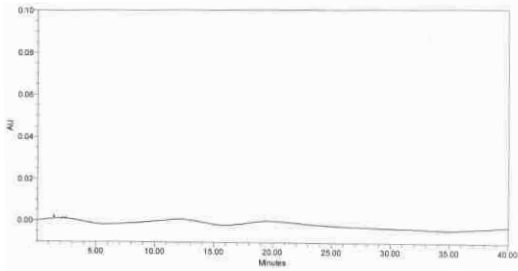
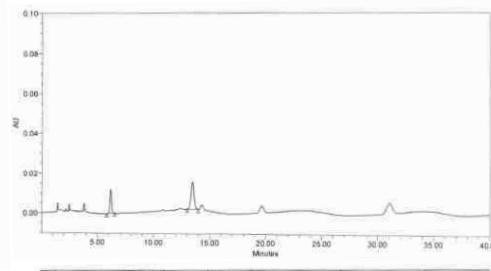


Assay of Sennoside in Samay churna by HPLC

Sample Name : Sennoside_Blank

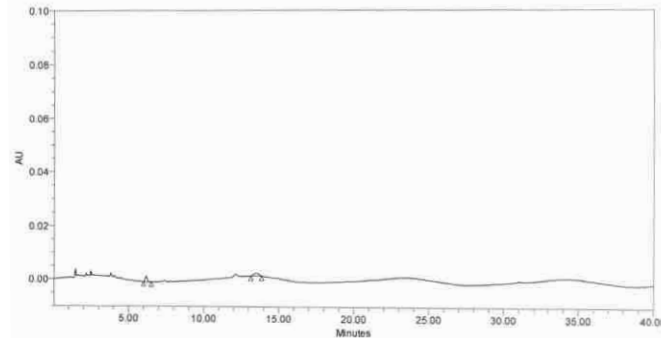


Sample Name : Sennoside_Standard



Peak Name	RT	Area	% Area	USP Plate Count	USP Resolution	USP Tailing
1 Sennoside-B	6.18	124666	32.76	8670		0.95
2 Sennoside-A	13.46	255631	67.24	12790	19.28	1.05

Sample Name : Shree Shanker Samay Churna



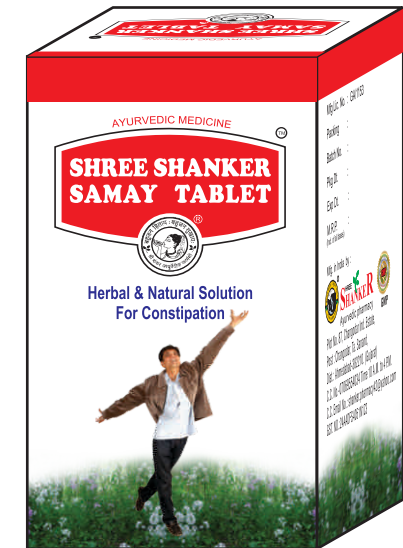
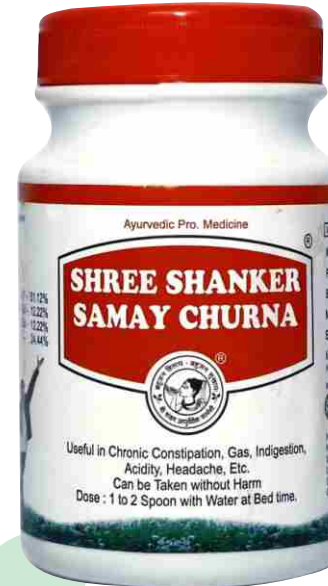
Peak Name	RT	Area	% Area	USP Plate Count	USP Resolution	USP Tailing
1 Sennoside-B	6.16	21642	47.62	8942		1.26
2 Sennoside-A	13.54	23801	52.38	4544	14.10	0.88

Calculations

Sample Details											
Sample Name	Batch Number	Report Number	L.C.	Avg. W/L Volume (mg/ml)	Taken (mg/ml)	Dilution (ml)	Taken (ml)	Dilution (ml)	Sample Conc. (µg/ml)	Concentration / % Assay	
Sennoside	GV-160	ARJ/COA/AYUSH/2111283/99	1	1.00	20.20	100	1	1	202	0.026992507	2.70
Area: 45443											
Standard Details											
Drug Name	Working Standard Number	Patency (%)	Weight Taken (mg/ml)	Dilution (ml)	Taken (ml)	Dilution (ml)	Std. Conc. (µg/ml)				
Calcium Sennoside	NA	21.74	10.90	50	1	1	210	Area: 380497			
Drug Name	Molecular Weight of Base	Molecular Weight of Drug		Molecular Factor							
Calcium Sennoside	1.00	1.00		1.000							
Formula											
$\text{Conc. (Desired) (mg/ml)} = \frac{\text{Sample Area} \times \text{Absorbance} \times \text{Std. Conc.} \times \text{Patency} \times \text{Molecular Factor} \times \text{Avg. W/L}}{\text{Standard Area} \times \text{Sample Concentration} \times 100}$											
$\text{Abbreviation: } C = \text{Label Claim, Conc.} = \text{Concentration, W} = \text{Weight, Std} = \text{Standard}$											
Analysed By: <i>[Signature]</i>					Checked By: <i>[Signature]</i>						
Date: 02. Dec 15					Date: 02. Dec 15						

Analysis Results

NO	Test Parameter	Label Claims	Result	Specification IHS
1	Description		Light green colour powder	Light green colour powder
2	Assay of sennoside By HPLC		2.70 %	As per IHS



COMPLETELY SAFE & NON-HABITUAL



SHREE SHANKER
Ayurvedic pharmacy



Plot No. 87, Changodar Ind. Estate, Sarkhej Bavla Road,
Post : Changodar, Ta. Sanand, Dist.: Ahmedabad-382210
Mo. No.: 9428500538, 94094 20783, 96625 99500
samaychurna@yahoo.com / www.shreeshankarayurvedicpharmacy.com

Description

Following the basic principles of Ayurved has been the tradition and culture of **Shree Shanker Ayurvedic Pharmacy.**

If any person is unhealthy and become sick, then how can he get healthy & recover soon is the main goal of **Shree Shanker Ayurvedic Pharmacy.**

In today's lifestyle physical-mental stress, aggressiveness, anxiety, insomnia, irregular eating, overload of work, late night parties, sleeping late at night, intake of junk food, fast food, strange spicy diet etc. cause many body problems and many diseases arise due to poor digestion power.

Ayurvedic ingredients such as Sonaumkhi, Ajwain, Sowa, Black salt have been combined in **Shree Shanker Samay Churna & Tablet** which helps to stimulate poor digestion power and also regularizing the stools and problems like Chronic Constipation, Gas, Acidity, Headache, Sour bleaching, Heaviness in stomach, Piles etc.

This formulation has been made after the research & clinically experienced by famous Vaidya of Gujarat **Late shree Vaidya Ramanlal Agnihotri.**

Shree Shanker Samay Churna & Tablet has been manufactured with a combination of Ayurvedic herbal ingredients. It is a formula which has been proved to be completely safe and effective in many disease mentioned above by stimulating the digestion power.

**“DEMANDS OF TODAYS TIME
SHREE SHANKER SAMAY CHURNA / TABLETS”**

INGRIDIENTS & DOSAGE

SHREE SHANKER SAMAY CHURNA	SHREE SHANKER SAMAY TABLET
SONAMUKHI AJWAIN SOWA BLACK SALT	SONAMUKHI AJWAIN SOWA HARITAKI (HARADE) SHU.BRUHADANTI TRIVRUT INDRAVARNAMOOL

DOSAGE:

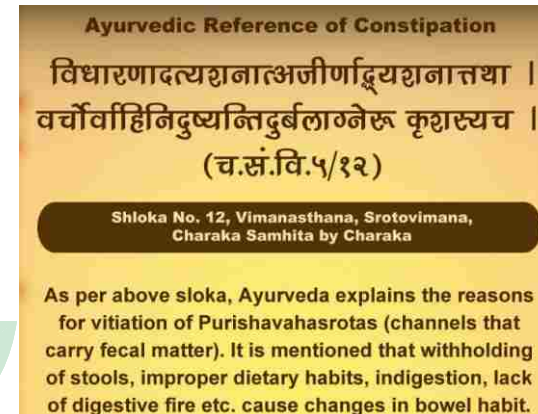
SHREE SHANKER SAMAY CHURNA :

1 or 2 table spoon at bed time with warm water as directed by physician

SHREE SHANKER SAMAY TABLET:

1 tablet at bed time with luke warm water or as directed by physician

What is Constipation ?



Symptoms of Constipation

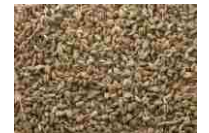
- Hard and dry stools
- Difficulty in passing feces
- Pain during defecation
- Abdominal pain
- Less than three defecations in a week



Sonamukhi



Haritaki



Ajwain



Trivrut