

"आयुर्वेदोऽमृतानाम्"  
क्वचिद् धर्मः क्वचिन्मैत्री, क्वचिदर्थः क्वचिदयशः ।  
कर्माभ्यासः क्वचिच्चेति, चिकित्सा नास्ति निष्फला ॥



“आयुर्वेद” स्पर्श प्रकृतिका



SHREE  
**SHANKE R**  
Ayurvedic pharmacy



Since 1942

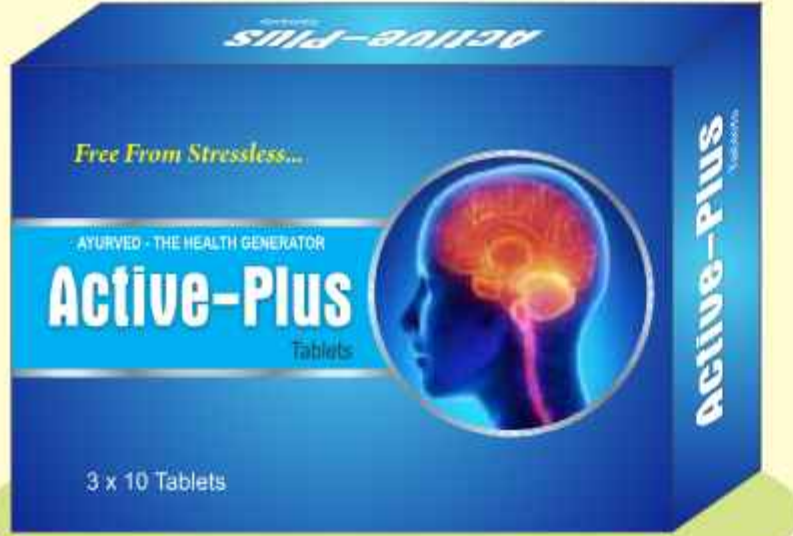
ISO 9001:2015 & GMP Certified Company

# Active-Plus

Hypertension, Insomnia, Brain disorder

एक्टिव-प्लस

अनिद्रा, अपस्मार में गुणकारी



Each coated tablet contains :

Ashwagandha	(अश्वगंधा)	111.1 mg
Khurasani Ajmo	(खुरेसानी अजमो)	111.1 mg
Jatamansi	(जटामांसी)	222.2 mg
Tagar	(तगर)	55.44 mg

## Indication :

- Hypertension
- Insomnia
- Brain disorder

# ACIDITON Tablet

Antacid - Antiflatulent

## एसिडीटोन टेब्लेट

अम्लपित्त - अजीर्ण - दाह



Gairik	(गैरीक)	20 mg.	Sunthi	(सुंठी)	20 mg.
Avipatkar Churna	(अविपतिकर चुर्ण)	40 mg.	Amala	(आमला)	20 mg.
Kamdudha Ros	(कामदुधा रस)	20 mg.	Chitranshi	(शबिभूल)	20 mg.
Sutshekhar Ras	(सुतसेखर रस)	40 mg.	Jatamansi	(जटामांसी)	20 mg.
Yastimadhu	(यष्टीमधु)	40 mg.			

### Indication :

- Acidity
- Indigestion
- Burning in chest & Stomach
- Pittavikar

# ASHTHANIL (TABLET & SYRUP)

Asthama & Breathlessness

## अस्थानिल (टेबलेट & सीरप) श्वास कष्टता में गुणकारी



		Tablet	Syrup			Tablet	Syrup
Karkat Shrungi	(कर्कट श्रुंगी)	24 mg.	225 mg.	Erand mool	(एरंड मूल)	12 mg.	112.5 mg.
Kantkari	(कटकारी)	24 mg.	225 mg.	Bhuamalki	(भु. आम्लकी)	12 mg.	112.5 mg.
Pipper	(पिपर)	6 mg.	56.25 mg.	Vasa	(वासा-अरुद्रसी)	24 mg.	225 mg.
Shathi	(षट कपुर)	12 mg.	112.5 mg.	Marich	(मरीच)	6 mg.	56.25 mg.
Hingu	(हिंगु)	4 mg.	56.25 mg.	Sunth	(सुंठी)	8 mg.	56.25 mg.
Elaichi	(एला)	4 mg.	40 mg.	Haridra	(हरिद्रा)	12 mg.	225 mg.
Tulsi	(तुलसी)	12 mg.	112.5 mg.	Lavanga	(लवंग)	4 mg.	40 mg.
Bharangmool	(भारंगमूल)	24 mg.	225 mg.	Yastimadhu	(यष्टिमधु)	24 mg.	225 mg.
				Ark	(अर्क पत्र)	4 mg.	56.25 mg.

### Indication :

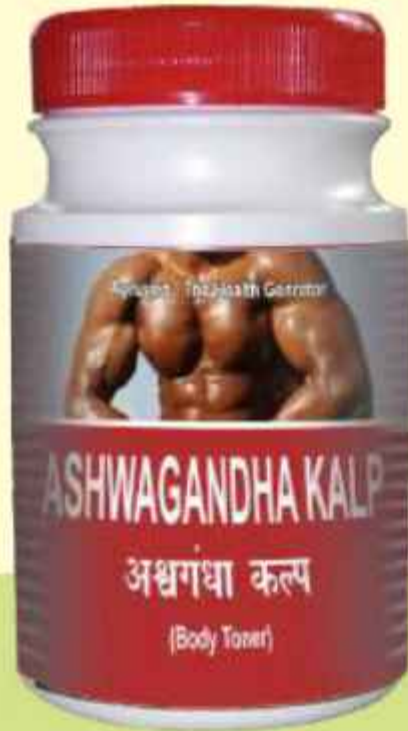
- Cough & cold
- Bronchitis
- Asthama
- Breathlessness
- Bronchogenic Disorder

# ASHWAGANDHA KALPA

Promote Body Weight

## अश्वगंधा कल्प

शक्ति एवं बल वर्धक



Ashwagandha (अश्वगंधा)	16.13 %	Elaichi (एलची)	0.54 %
Shatavari (शतावरी)	6.99 %	Jaiphal (जायफल)	0.54 %
Jethimadh (जेठीमध)	2.69 %	Javantri (जावत्री)	0.54 %
Kaucha (कौचा)	2.69 %	Sugar (साकर)	q.s.

### Indication :

- Improve body weight  
muscular tone
- Remove weakness

# BAL BHADRA SYRUP

Precaution is better cure for Child

## बालभद्र सीरप

बच्चो का स्वास्थ्य रक्षक



Lindipippar	(लींडीपीपर)	0.500 mg.
Nagarmoth	(नागरमोथ)	0.500 mg.
Kakda Shringi	(काकडाश्रुंगी)	0.500 mg.
Anantmool	(अनंतमूल)	0.500 mg.
Vidang	(विडंग)	0.500 mg.
Haritaki	(हरितकी)	0.500 mg.
Ativisha	(अतिविष)	0.500 mg.
Sugar	(साकर)	Q.S.

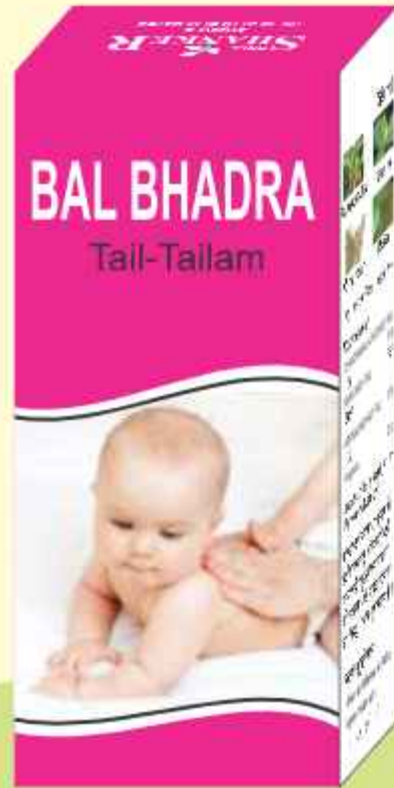
### Indication :

- Children Disease e.g. Cold Cough
- Fever
- Vomiting
- Diarrohea
- Breathlessness

# Bal Bhadra Tail

## Baby Massage Oil

बाल भद्र तैल  
बेबी मसाज ओईल



Chandanbala Lakshadi Tail	(चंदनबला लाक्षादि तैल)	34 %
Maha Masha Tail	(महा मासा तैल)	33 %
Ashwagandha Tail	(अश्वगंधा तैल)	33 %

### Indication :

- This baby oil is useful for massage to improve the strength of bone & Muscles

# BRAHMI SYRUP

Improve Memory, Concentration

## ब्राह्मी सीरप

स्मृतिवर्धक तथा एकाग्रता के लिए



Brahmi	(ब्राह्मी)	550 mg.
Shank Pushpi	(शंख पुष्पी)	275 mg.
Jatamansi	(जटामांसी)	130 mg.
Vacha	(वचा)	130 mg.
Sarpagandha	(सर्पगंधा)	65 mg.
Sugar	(साकर)	Q.S.

### Indication :

- Improve memory & concentration
- Remove mental Stress
- Epilepsy
- Insomnia



# Brahmi Tail

The Hair Generator

## ब्राह्मी तैल

केश रक्षक-एवं केश पोषक



Til Tail	(तिल तैल)	100 %
<b>Process in</b>		
Brahmi	(ब्राह्मी)	35 %

### Indication :

- This Medicated hair oil improve the Growth of hair
- Protect Hair from Pollution
- Usefull for Shirodhara

# CALSE TABLET

Osteoarthritis & Calcium Deficiency

## केल्सी टेबलेट

केल्शियम की कमी को दूर कर अस्थि पोषण में सहायक



Lakshadi Gugal	(लाक्षादि गुगल)	100 mg.
Abha Gugal	(आभा गुगल)	100 mg.
Godanti Bhasma	(गोदंती भस्म)	50 mg.

### Indication :

- Osteoarthritis
- Osteomalacia
- Osteoporosis
- Vat Vyadhi
- Calcium Deficiency
- Body Pain

# DANT-SHUDHI Powder

Better Dental Care

## दंतशुद्धी पावडर

दांतो को सुदृढ एवं सुरक्षित रखे



Sunth	(सुंठी)	5 %	Lavanga	(लवंग)	5 %
Haritaki	(हरितकी चूर्ण)	5 %	Taj	(तज-वालचीनी)	5 %
Nagarmoth	(नागरमोथ)	5 %	Mayaphal	(मायफल)	5 %
Khadir	(खदीर)	5 %	Surashtri	(सौराष्ट्री)	5 %
Kapoor	(कपूर)	5 %	Khadi	(खडी)	50 %
Marich	(मरीच)	5 %			

### Indication :

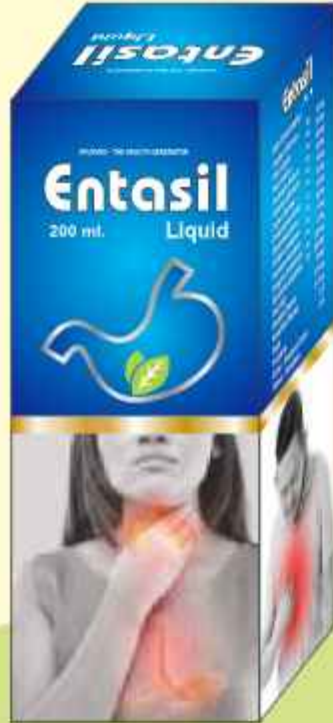
- Pyorrhea, Bad Breath, Gum Boil,
- Spongy Gums, Alveolalgia and  
Different type of buccal Cavity Diseases

# Entasil Liquid

Hyper Acidity, Sour Acidity, Indigestion

## एंटासिल

अम्ल अम्लपित, तिक्खण अम्लपित में गुणकारी



Each 10 ml contains :

Sunthi	(सुंठ)	10 mg
Mari	(मरी)	10 mg
Piper	(पीपर)	10 mg
Harde	(हरडे)	10 mg
Amla	(आम्ला)	10 mg
Musta	(मुस्ता)	10 mg
Tamal	(तमाल)	10 mg
Yasti	(जेठिमथ)	10 mg
Elaichi	(इलायची)	5 mg
Elacho	(बडी इलायची)	5 mg
Laving	(लवींग)	110 mg
Trivrut	(त्रिवृत)	250 mg
Bidlavana	(बिडलावणा)	10 mg
Shankh Bhasma	(शंख भस्म)	2.5 mg
Kodi Bhasma	(कोडी भस्म)	2.5 mg
Sugar	(शक्कर)	Q.S

### Indication :

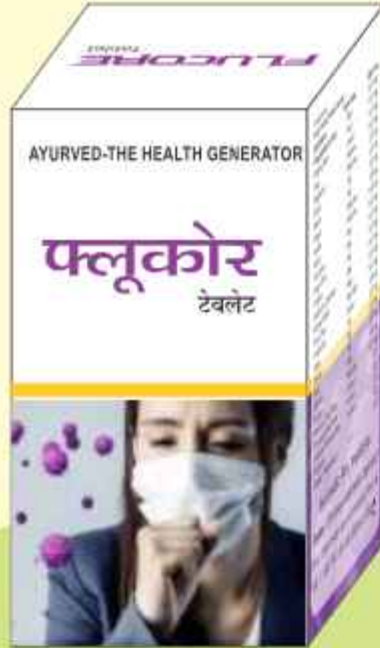
- Hyper Acidity
- Sour Acidity
- Indigestion
- Chronic Cough

# FLUCORE Tablet

Fever, Cough Disorder

## फ्लूकोर टेबलेट

ज्वर, खांसी-जुकाम में अत्यंत गुणकारी



#### Each Coated Tablet Contain

Ingredients		Qty. in mg
Giloy(Guduchi, Galo)	गीलोय	16.13 mg
Bharang Mool	भारंग मूल	16.13 mg
Vasa	वास	16.13 mg
Nagkeshar	नागकेशर	16.13 mg
Sunthi	सुंठ	5.37 mg
Marich	मरीच	5.37 mg
Pippali	पिपली	5.37 mg
Haridra	हरीद्रा	8.06 mg
Katuki	कटुकी	16.13 mg
Punamava	पुनर्नवा	16.13 mg
Varun Chhal	वरुणखल	16.13 mg
Gokshur	गोक्षुर	16.13 mg

#### Each Coated Tablet Contain

Saptarna Chhalstem	सप्तपर्ण खल	16.13 mg
Kantkari Whole	कंटकारी	16.13 mg
Kutaj Chhal	कुटज खल	16.13 mg
Vansiochan	वंसलोचन	8.06 mg
Harde	हर्दे	5.37 mg
Baheda	बाहेडा	5.37 mg
Amla	अमौला	5.37 mg
Sphatika	स्फटिका	8.06 mg
Kachuro	कचुरो	16.13 mg
Bhavana of Tulsi Patra	तुलसी पत्र भावना	Q.S.
Bhavana of Nimb Patra	नींब पत्र भावना	Q.S.
Bhavana of Papaiya Patra	पपीया पत्र भावना	Q.S.

### Indication :

- Fever
- Cough Disorder
- Bronchial disorder
- Rheumatism
- Immunity

# Garbhadharini Vati

unique remedy for Infertility

## गर्भधारीणी वटी

स्त्री रोग तथा व्यंध्यत्व के लिए ।



Shivlingbeej	(शिबलींग बीज)	50 mg.	Vidarikand	(विदारी कंद)	10 mg.
Chandan	(चन्दन)	05 mg.	Suvarna Bhasma	(सुवर्ण भस्म)	0.50 mg.
Yasthimadhu	(यष्टीमधु)	10 mg.	Raupya Bhasma	(रौप्य भस्म)	0.100 mg.
Varahi Kand	(वारहिकंद)	10 mg.	Loha Bhasma	(लोह भस्म)	1.25 mg.
Ashwagandha	(अश्वगंधा)	10 mg.	Bang Bhasma	(बंग भस्म)	1.25 mg.
Shatavari	(शतावरी)	10 mg.	Tribang Bhasma	(त्रिवंग भस्म)	1.25 mg.
Kuth	(कुठ)	10 mg.	Mukta Bhasma	(मुक्ता भस्म)	1.25 mg.
Brahmi	(ब्राह्मी)	10 mg.	Praval	(प्रवाल)	1.25 mg.
Nagkeshar	(नागकेशर)	10 mg.	Makardhwaj	(मकरध्वज)	1.25 mg.
Kesar	(केशर)	1.25 mg.	Ras Sindur	(रस सिन्दुर)	1.25 mg.

### Indication :

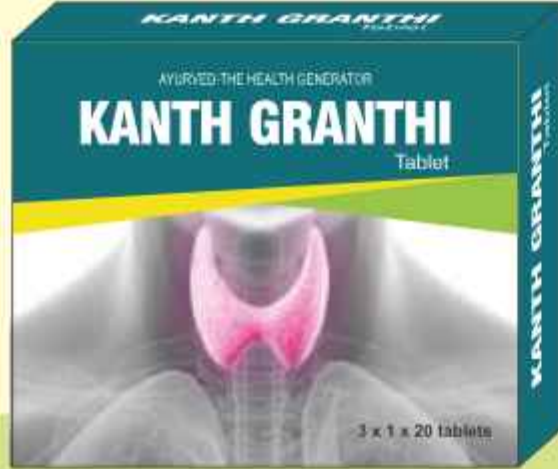
- Female Infertility

# Kanthgranthi Tablet

Thyroid Disorder

कंठग्रंथि टेबलेट

थाइराइड विकार



#### Each 500 mg Tablet Contains :

Harde	(हरडे)	290 mg.
Shuddh Guggalu	(शुद्ध गुग्गुलु)	10 mg.
Shuddh Shilajit	(शुद्ध शिलाजीत)	10 mg.
Guduchi Ghan	(गुडुची घन)	190 mg.
<b>Bhavana</b>		
Go Mutra	(गौ मूत्र)	Q.S

#### Indication :

- Gulma
- Shoth
- Thyroid

# KAUCHA PAK

Male Infertility - Vat Vyadhi

## कौचा पाक

शुक्राणु की अल्प मात्रामें तथा वातविकार में उपयोगी



Kavach beej	(कवच बीज)	2.5 %
Sunthi	(सुंठी)	0.2 %
Pipper	(पीपर)	0.2 %
Marich	(मरीच)	0.2 %
Elaichi	(इलायची एला)	0.½ %
Jayphal	(जायफल)	1 %
Javantri	(जावन्त्री)	1 %
Sugar	(सकर)	Q.S.

### Indication :

- Male Infertility
- General Debility
- Weakness
- Improve Internal strength



# KESHKANT HERBAL HAIR OIL

Nonsticky, Chemical Free Herbal Medicated Oil

## केशकान्त तैल

चिपचिपाहट रहित, केमीकल फ्री, हर्बल केश तैल



Til Tail	(तिल तैल)	50 %	Vidang	(विडंग)	01 %
Narikel	(नारिकेल तैल)	25 %	Sariva	(सारीवा)	01 %
Erand Tail	(एरंड तैल)	12.5 %	Chandan	(चंदन)	0.50 %
Nimb Tail	(निम्ब तैल)	6.25 %	Tagar	(तगर)	0.50 %
Karanj Tail	(करंज तैल)	6.25 %	Gulab	(गुलाब फूल)	0.50 %
Bhringraj	(भृंगराज)	02 %	Mehandi	(मेहंदी)	01 %
Brahmi	(ब्राह्मी)	02 %	Nimb	(निम्ब)	01 %
Amala	(आमला)	02 %	Jatamansi	(जटामांसी)	0.50 %
Moth	(मोथ)	01 %	Kapur Kachli	(कपूर काचली)	0.50 %
Manjistha	(मंजिष्ठा)	01 %	Kachuro	(कचुरो)	0.50 %
Haritaki	(हरितकी)	01 %	Dudhi	(दुधी)	01 %
Daru Haridra	(दारु हरीद्रा)	01 %	Kapoor	(कपूर)	01 %
Gunja	(गुंजा)	01 %	Phudina Ka Pool	(फुदीना का फूल)	0.50 %
Limbu	(लींबु)	01 %			

### Indication :

- For Breaking & Falling Hair
- Baldness
- Dandruff

# KESHKANT TABLET

Herbal Hair Tonic

## केशकान्त टेबलेट

केश (बालो) के लिए उत्तम पोषक



Amala	(आमला)	40 mg.
Brahmi	(ब्राह्मी)	40 mg.
Shatavari	(शतावरी)	30 mg.
Bhringraj	(भृंगराज)	20 mg.
Vidang	(विडंग)	20 mg.
Punarnava	(साटोडी)	20 mg.
Godanti	(गोवंती)	20 mg.
Ashwagandha	(अश्वगंधा)	20 mg.
Jatamansi	(जटामांसी)	20 mg.
Haritaki	(हरितकी)	10 mg.
Yasthimadhu	(यस्तीमधु)	20 mg.

### Indication :

- For Breaking & Falling Hair
- Baldness
- Dandruff

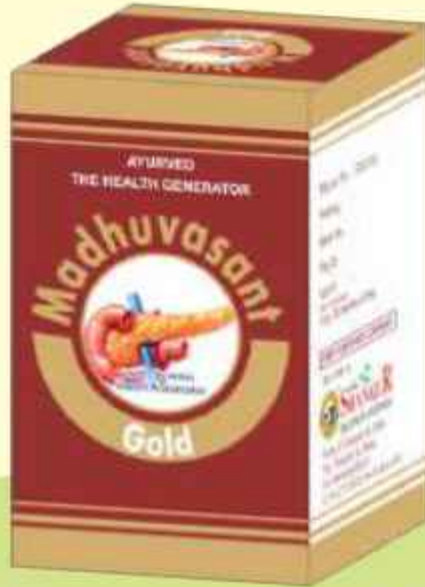
# MADHUVASANT GOLD TABLET

(with Su. Vasantkusumakar Yukta)

Sugar Controler

मधु वसंत गोल्ड टेब्लेट

(सुवर्ण वसंतकुसुमाकर युक्त)  
(शर्करा को नियंत्रित रखे)



Amla	(आमला)	22 mg.	Indravarna	(इन्द्रवारुणी)	22 mg.
Harde	(हरितकी)	22 mg.	Yasthimadhu	(यष्टीमधु)	22 mg.
Vibhitak	(विभितक)	22 mg.	Tribang Bhasma	(त्रिवंगभस्म)	11 mg.
Devdar	(देवदार)	22 mg.	Su. Shilajit	(शु.शिलाजीत)	11 mg.
Haldar	(हरिद्रा)	22 mg.	Su. Vasant Kusumakar ras	(सु. वसंत कुसुमाकर रस)	2 mg.
Daruhaldar	(दारुहरिद्रा)	22 mg.	Suvarna Bhasma	(सुवर्ण भस्म)	0.02 mg.
Nagarmoth	(नोब)	22 mg.			

## Indication :

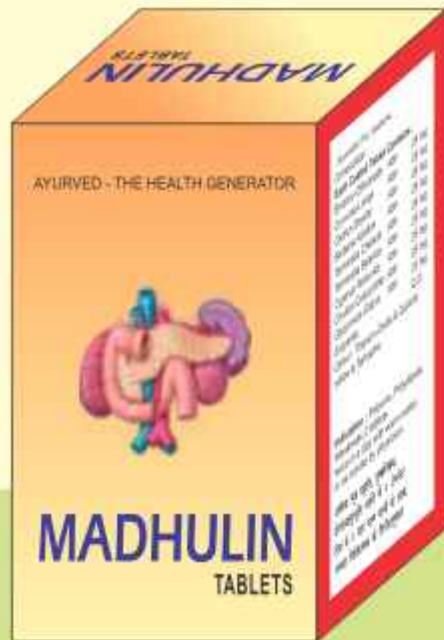
- Pancreas is one of the very important organ of the body, Disorder of Pancreas is create so may Problem.
- E.G. uneven of sugar in body, loss of weight, UTI, Physical debility, weakness, skin disease, constipation, loss of immunity, etc.

# MADHULIN TABLET

Sugar Controller

## मधुलीन टेबलेट

(शर्करा को नियंत्रित रखे)



Amla	(आमलकी)	25 mg.	Vibhitak	(विभितक)	25 mg.
Haridra	(हरिद्रा)	25 mg.	Nagar Moth	(नागरमोथ)	25 mg.
Devdar	(देवदार)	25 mg.	Indravaruni	(इन्द्रवारुणी)	25 mg.
Daruhaldi	(दारुहल्दी)	25 mg.	Mulethi	(मुलेठी)	25 mg.
Hariitaki	(हरितकी)	25 mg.			

### Indication :

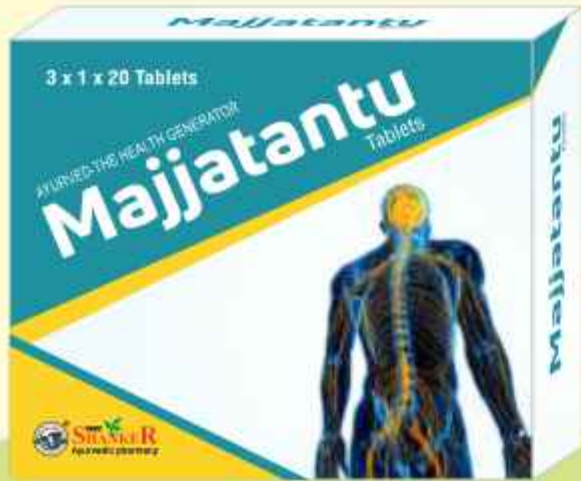
- Control Excess sugar Diabetes mellitus, U.T.I., Weakness

# MAJJATANTU TABLET

Paralysis & Neuro-muscular Disorder

## मज्जातंतु टेबलेट

(केन्द्रीय तंत्रिका तंत्र पक्षघात और न्यूरो पेशी संबंधी विकारो के इलाज के लिए)



Parasikayavani	(खुरेसानी अजवायन)	120 mg.
Rasa Sindoor	(रस सिंदुर)	10 mg.
Sut Shekhar Rasa	(सुतशेखर रस)	120 mg.
Ekanveer Rasa	(एकांगवीर रस)	120 mg.
Sameer Pannag Rasa	(समीर पन्नग रस )	10 mg.
Mahavat Vidhwans Rasa	(महावातविध्वंस रस)	120 mg.

### Indication :

- Treatment of Paralysis and neuro-muscular disorder of the CNS (central Nervous Systemsyndrome & Mylagia)
- It is also effective in Hemiplegia (Paralysis of one side of body) and also in nerve injury.

# Lucocin

Tablet & Syrup

Remedy for Femal Disorder-Udavertayoni

## ल्युकोसीन टेब्लेट & सीरप

स्त्री रोगों में गुणकारी तथा उदार्वतायोनी में उपयोगी



	Tablet	Syrup		Tablet	Syrup
Ashwagandha (अश्वगंधा)	20 mg.	250 mg.	Ashok Chhal (अशोक छाल)	20 mg.	250 mg.
Shatavari (शतावरी)	20 mg.	250 mg.	Sarj Ras (सर्ज रस)	20 mg.	250 mg.
Vasa (वास)	20 mg.	250 mg.	Lodhra (लोध्र)	20 mg.	250 mg.
Rasna (रासना)	20 mg.	250 mg.	Nagkeshar (नागकेशर)	20 mg.	250 mg.
Gokharu (गोधुर)	20 mg.	250 mg.	Sugar (सुगर)		q.s.
Devdar (देवदार)	20 mg.	250 mg.			

### Indication :

- Udavertayoni
- Excessive bleeding
- Abdomen Pain
- Lower Backache
- Other Female Disorder

# PILOCARE TABLET

Batter Care For Piles, Fissure

## पाइलोकेर टेबलेट

अर्श रोग (पाइल्स) फिशर



Ajmo	(अजवायन)	15 mg.	Nimb Patra	(निम्ब पत्र)	15 mg.
Jirak	(जीरक)	15 mg.	Nagkeshar	(नागकेशर)	15 mg.
Dhanyak	(धान्यक)	15 mg.	Suran	(सुरण)	15 mg.
Musta	(मुस्ता)	15 mg.	Tankan	(शु. टंकण)	7.5 mg.
Vidanga	(विडंग)	15 mg.	Triphala	(त्रिफला)	45 mg.
Chitrak	(चित्रक)	15 mg.	Karanj	(करंज)	7.5 mg.
Dantimul	(दन्तीमूल)	15 mg.	Trikatu Churna	(त्रिकटुचूर्ण)	45 mg.

### Indication :

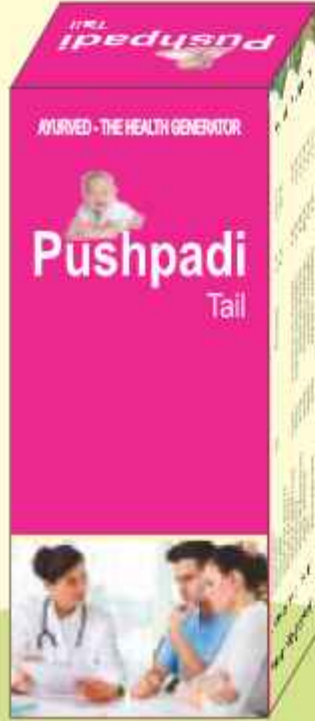
- Haemorrhoids  
Painful & Inflammed  
Bleeding Piles  
Constipation  
Indigestion

# Pushpadi Tail

Gynacological - disorder

## पुष्पादि तैल

स्त्री रोग - एवं व्यंध्यत्व जन्य समस्या में



Bala Taila	(बला तैल)	100 %	Indravama	(इन्द्रवामा)	1.5 %
Process in Cow Milk	(गौ दुध)	25 %	Piludi (Kakamachi)	(ककामाची)	1.5 %
Sneh Pak Dravya			Adad (Masha)	(अदद)	1.5 %
Kwath Dravya			Jav	(जव)	1.5 %
Variyali (Mishreya)	(वरीली मीशरेया)	3 %	Ashwagandha	(अश्वगंधा)	1.5 %

### Indication :

- Various kind of gynecological disorder  
e.g. infertility  
Excess or poor & painful discharge from vagina



# RUMEX TABLET (WITH GOLD)

For Acute & Chronic & Rheumatism

रुमेक्ष टेब्लेट (सुवर्ण युक्त)

जीर्ण एवं तीव्र संधिगत वातविकार के लिए



Ashwagandha (अश्वगंधा)	30 mg.	Brihat Vat	
Rasana (रास्ना)	30 mg.	Chintamani Ras (चिंतमणी रस)	0.4 mg.
Mulethi (मुलेटि)	30 mg.	Rasraj Ras (रसरज रस)	0.4 mg.
Granthi Mool (ग्रन्थीमूल)	30 mg.	Suvarna Bhasma (सुवर्ण भस्म)	0.08 mg.
Shatavari (शतावरी)	30 mg.	Shu.Guggal Shuddha (शु. गुगुल)	30 mg.
Godanti Bhasma (गोदंतीभस्म)	30 mg.		

## Indication :

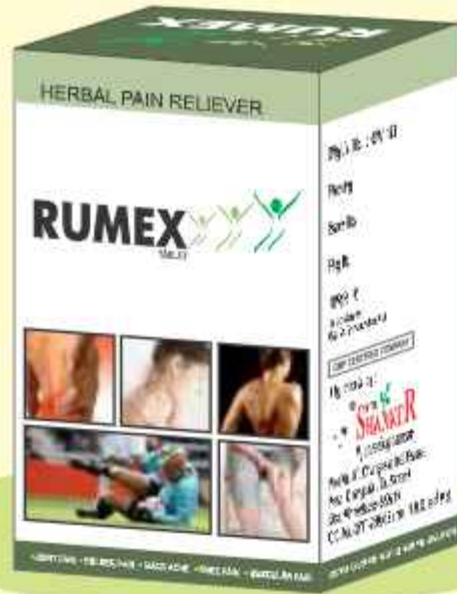
- Joint Pain
- Arthritis
- Rheumatism
- Backache
- Weakness
- Vatvyadhi

# RUMEX TABLET

Unique Remedy for joint pain

## रुमेक्ष टेबलेट

वात व्याधि की अनुभूत उत्तम औषध



Ashwagandha (अश्वगंधा)	35 mg.	Granthi Mool (ग्रन्थीमूल)	35 mg.
Shatavari (शतावरी)	35 mg.	Rasana (रासना)	35 mg.
Mulethi (मुलेठी)	35 mg.	Godanti Bhasma (गोदंतीभस्म)	35 mg.

### Indication :

- Rheumatism
- Arthritis, Sciatica
- Joint Pain
- Frozen Shoulder
- Muscular Pain
- Lumbago

# RUMEX DS TABLET

Vat-Vyadhi & Rheumatic Arthritic

## रुमेक्ष दि-एस टेबलेट

( वात-व्याधि और जोडो में दर्द, स्नायु में जकडन आदि रोगो में अत्यंत गुणकारी )



Maha rasnadi kwath	(महारासनादी क्वाथ)	243 mg
Shallaki	(शल्लकी)	10 mg
Sihnad Guggalu	(सिंहनाद गुग्गलु)	122 mg
Mahayograj Guggalu	(महायोगराज गुग्गलु)	113 mg
Samir Pannag Rasa	(समीर पन्नग रस)	10 mg
Kesar	(केसर)	2 mg
<b>Bhavana</b>		
Dashmool Kwath	(दशमूल क्वाथ)	Q.S
Erand tail	(एरंड तैल)	Q.S

### Indication :

- This medicine is mainly beneficial in Joint Pain, Arthritis, Vata-Vyadhi, Broken Bone, Swelling etc.
- This tablet contains Analgesic, Anti-Inflammaatory Properties
- Shallaki, Mahayograj Gugglu, Maharashnadi Kwath are mainly effective in Rheumatic Arthritis.

# RUMEX oil

Relives Pain in Rhumatism

## रुमेक्ष तैल

शूल एवं वेदना के लिए गुणकारी



Mahamash Tail	(महामाष तैल)	2.5 ml.
Narayan Tail	(नारायण तैल)	2.5 ml.
Mahanarayan Tail	(महानारायण तैल)	2.5 ml.
Maha Vishgarbh Tail	(महाविषगर्भ तैल)	2.5 ml.

### Indication :

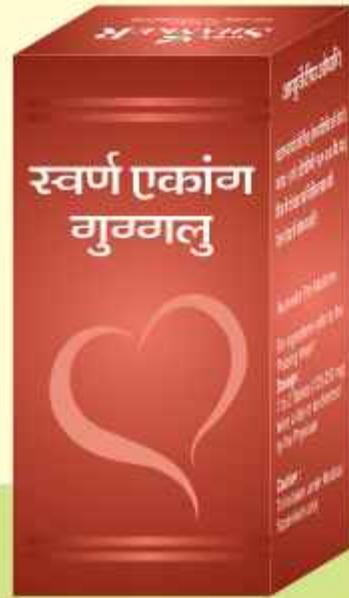
- Rheumatism
- Joint Pain
- Muscular Pain
- Arthritis
- Sciatica
- Lumbago
- Frozen Shoulder

# Swarna Ekang Guggulu

Vatrog, Neurological & Neurobehavioral Condition

## स्वर्ण एकांग गुग्गुलु

( वातरोग, नसो की कमजोरी, एवं शरीर की दुर्बलता दुर करने में अत्यंत गुणकारी )



### Ingredients:

Swarna Bhasma	( स्वर्ण भस्म )	2 mg
Kesar	( केसर )	3 mg
Shu-Guggal	( शु-गुग्गुलु )	10 mg
Ekangveer Rasa	( एकांगवीर रस )	110 mg
<b>Bhavana -</b>		
Maharasnadi Kwath	( महारासनादी क्वाथ )	Q.S

### Indication :

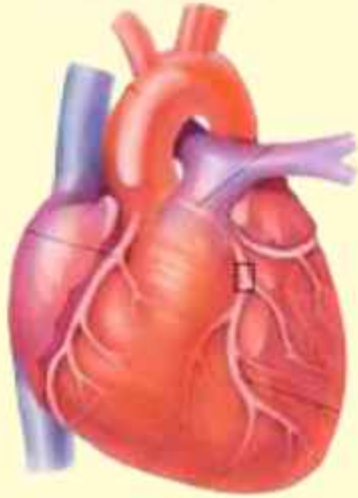
- Vata Roga such as Arthritis, Sciatica, Joint Pain, Paralysis, Physical as well as mental weakness along with nerve weakness.
- It is beneficial in Neurological & in Neurobehavioral condition.
- It is also act an Rejuvenator (Rasayan) due to presence of kesar & Gold
- By giving the bhavana of Maharasanadi kwath is also used in swelling, anti-inflammatory, Anemia & in Rheumatic Activity

# SCARDIL TABLET

Normalize & Regularize Heart Function

## स्कारडिल टेबलेट

हृदय की गति को संतुलित करने हेतु



Haritaki	(हरितकी)	20 mg.	Pushkarmul	(पूष्कर मूल)	20 mg.
Vacha	(वचा)	20 mg.	Su.Guggal	(शु. गुग्गुल)	20 mg.
Rasana	(रासना)	20 mg.	Brahmi	(ब्राह्मी)	20 mg.
Nagar	(नागर)	20 mg.	Kachur	(षट कयुरो)	20 mg.
Pipali Mool	(पीपली मूल)	20 mg.	(Shati)		
Arjun	(अर्जुन)	20 mg.			

### Indication :

- Regularize Heart Function
- Improve Efficacy of Heart
- Control Cholesterol
- Hypertension
- Anginal Pain

# SHANKERAMRIT TABLET & SYRUP

Liver Disorder, Iron Deficiency

## शंकरामृत टेब्लेट & सीरप

रक्तक्षय - रक्त अल्पता तथा यकृत विकार में गुणकारी



		TABLET	SYRUP			TABLET	SYRUP
Haritaki	(हरितकी)	25 mg.	45 mg.	Vasaka	(वासा-अरंडूसी)	25 mg.	45 mg.
Vibhitak	(विभीतक, बहेडा)	25 mg.	45 mg.	Neem Twak	(नीम त्वक)	25 mg.	45 mg.
Amla	(आमलकी)	25 mg.	45 mg.	Chirayta	(करियातु-चिरायता)	25 mg.	45 mg.
Amruta	(अमृता-गिलोय)	25 mg.	45 mg.	Kadu	(कटुकी)	25 mg.	45 mg.

### Indication :

- Liver Disorder
- Dyspepsia
- Anemia
- Iron Deficiency & related disorder
- Promote Appetite

# SHATAVARI KALP

Tonic For All

## शतावरी कल्प

सभी के लिए उत्तम शक्ती दायक



Shatavar	(शतावर)	2.5 %
Sunthi	(सुंठी)	1 %
Elaichi	(इलायची)	0.5 %
Sugar	(सक्कर)	q.s.

### Indication :

- Tonic in Pregnancy
- Stimulates
- Improve Lactation
- Hyper acidity
- burning
- Hormonel imbalance



# SHILAJIT TABLET

General Tonic

शीलाजीत टेबलेट  
शक्ति वर्धक



Shu. Shilajit

(शुद्ध शिलाजीत)

250 mg.

## Indication :

- Bronchitis
- Diabetic
- Melitus
- Dropsy
- Dysuriya
- Anaemia
- Inflammation
- Recommended as a tonic.

# SIM TABLET

For Obesity

## सीम टेबलेट

मेदोरोग के लिए



Agnimanth	(अग्निमंथ)	20 mg.
Vidanga	(विडंग)	20 mg.
Haritaki	(हरितकी चूर्ण)	20 mg.
Vibhitak	(विभीतक चूर्ण)	20 mg.
Dhatri	(धात्री)	20 mg.
Nagarmoth	(नागरमोथ)	20 mg.
Indravarni	(इन्द्रवारुनी)	20 mg.
Shu. Gugal	(शु. गुगुल)	20 mg.
Sunth	(सुंठी)	20 mg.
Marich	(मरीच)	20 mg.
Pipali Mool	(पीपली मूल)	20 mg.

### Indication :

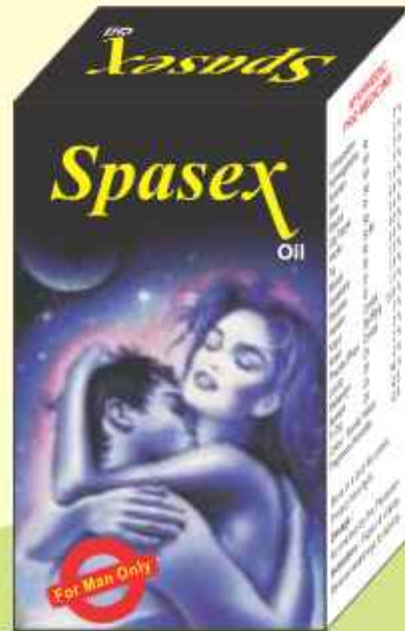
- Control Excess Fat & weight
- Keep Healthy

# SPASEX OIL

Massage in Physical Debility

## स्पासेक्स तैल

शारीरिक कमजोरी में मालिश हेतु



Til	(तिल तैल)	96.00 %
Lavang	(लवंग तैल)	2.00 %
Malkangani	(मालकांकी तैल)	2.00 %
Ashwagandha	(अश्वगंधा)	3.00 %
Kantkari	(कंटकारी)	3.00 %
Bala	(बला)	3.00 %
Masha	(माषा)	3.00 %
Gaj. Pipar	(गज पीपर)	1.50 %
Vacha	(वचा)	0.50 %
Taj	(तालचीनी)	0.47 %
Musli	(मुसली)	0.50 %
Akkalkaro	(अक्कलकरो)	0.50 %
Majith	(मजीठ)	0.50 %
Haridra	(हरीद्र)	1.50 %
Kapoor	(कर्पूर)	1.50 %
Kesar	(केसर)	0.03 %
Ajama Phool	(अजमा फूल)	2.00 %
Phudina Phool	(फुदीना फूल)	2.00 %

### Indication :

- To Promote & Maintain Muscular tone
- Stamina & Strength

# SPASEX GOLD TABLET

Improve VIM, VIGOUR Vitality

## स्पासेक्स गोल्ड टेबलेट

उत्साह - शक्ति - बलवर्धक



Each coated tablet contains of :					
Musli	मुसली	24 mg.	Bang Bhashma	बांगभस्म	5 mg.
Ashwagandha	अश्वगंधा	48 mg.	Loha Bhashma	लोहभस्म	5 mg.
Gokharu	गोधुर	48 mg.	Tribang Bhasma	त्रिबांगभस्म	5 mg.
Akkalkaro	अकालकरो	10 mg.	Shilajit	शिलाजीत	5 mg.
Kuchala	कुचला	5 mg.	Roupya Bhashma	रोप्यभस्म	5 mg.
Kavachbeej	कवचबीज	48 mg.	Rassindur	रस सिन्दुर	5 mg.
Jayphal	जायफल	5 mg.	Makardhwaj	मकरध्वज	5 mg.
Javentri	जावंत्री	5 mg.	Pushpadhanwa Ras	पुष्पधन्वा रस	5 mg.
Kesar	केसर	5 mg.	Elaichi	ऐलची	5 mg.
Lavang	लवंग	5 mg.	Elcho	ऐलचो	5 mg.
			Suvarna Bhashma	सुवर्णभस्म	0.05 mg.

### Indication :

- Improve internal Strength
- Remove Weakness
- Prove better Performance
- VIM Vitality

# SKIN ZONE Ointment (with sulfur)

Remedy for Skin disorder

स्कीनज़ोन गुलाबी मलम  
(गंधक युक्त)

त्वचा रोग में उपयोगी मलम



Su. Tankan	(शुं. टंकण)	5 %
Ras Kapoor	(रस कर्पूर)	1 %
Jasad bhasma	(जसद भस्म)	5 %
Kapoor	(कर्पूर)	1 %
Su. Gandhak	(शुं. गंधक)	5 %
Sindur	(सिंदूर)	0.5 %

## Indication :

- Eczema
- Ring Worm
- Itching
- Cold Creak

# SPASKIN TABLET

Blood Purifier & Skin Disorder

## स्पास्कीन टेबलेट

रक्त शुद्धिकर एवं त्वचा सम्बन्धित व्याधि



Manjishtha	(मंजीष्ठा)	25 mg.	Neem Twak	(निम्बत्वक)	25 mg.
Triphala Churna	(त्रिफला चूर्ण)	25 mg.	Vasa	(वासा)	25 mg.
Kadu	(कडु)	15 mg.	Khadir	(खदिर)	25 mg.
Chirayta	(करयातु-चिरायता)	15 mg.	Bakuchi	(बावची)	10 mg.
Ghodavaj	(घोडावज)	15 mg.	Sariva	(सारीवा)	25 mg.
Amruta	(गिलोय)	25 mg.			

### Indication :

- Blood Purifier
- Skin Related
- Disease
- Itching Burning

# STONO TABLET

Herbal Diuretic

## स्टोनो टेबलेट

हर्बल मूत्र विरेचक



Punarnava (पुनर्नवा)	45 mg.	Varun (वरुणछाल)	45 mg.
Gokharu (गोधुर)	45 mg.	Pashanabhed (पाषाणभेद)	45 mg.
Yavakshar (यवक्षार)	45 mg.		

### Indication :

- Dysuria
- Calculi
- Cystitis
- Urinary Track Infection
- Prostatitis

# STONO SYRUP

Herbal Diuretic

## स्टोनो सीरप

हर्बल मूत्र विरेचक



Punarnava	(पुनर्नवा)	120 mg.	Khuresani Ajwayan	(खुरेसानी अजवायन)	120 mg.
Gokharu	(गोकुशुर)	120 mg.	Kakdi Beej	(काकडी बीज)	120 mg.
Varun	(वरुणछाडल)	120 mg.	Vasa	(वासा-अरहुसी)	120 mg.
Pashanabhed	(पाषाणभेद)	120 mg.	Sugar	(साकर)	q.s.
Erand Mool	(एरंड मूल)	120 mg.			
Apamarg	(अपामार्ग)	120 mg.			

### Indication :

- Dysuria
- Calculi
- Cystitis
- Urinary Track Infection
- Prostatitis

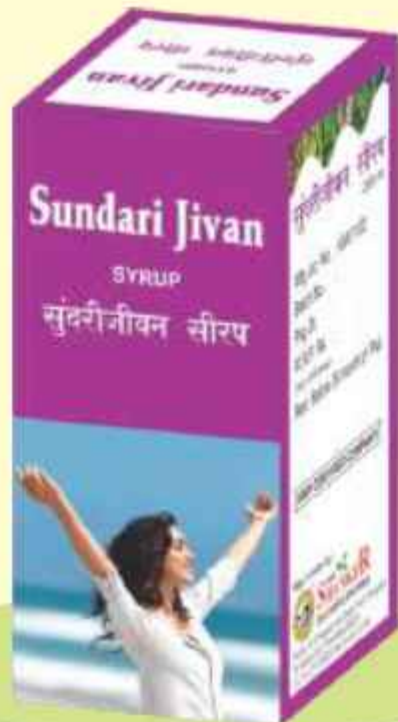


# SUNDARI JIVAN SYRUP

Protect women from monthly distress

## सुंदरी जीवन सीरप

स्त्रियों को हर माह होनेवाली पीडा से सुरक्षित रखे ।



### Indication :

Monthly cycle is a critical & horrible time for her, Sundri Jivan syrup is helpful in so many type of Yonivya Pad also improve blood level, Remove weekness, Relax From Various type of distress & Pain

Shree Shankar

# Suvarna Shakti Bindu

Ayurvedic Immunization

श्री शंकर  
सुवर्ण शक्ति बिंदू  
(आयुर्वेदिक इम्युनाइजेशन)

बच्चो को स्वस्थ - शक्तिशाली - स्मार्ट रखे



**Each 10 ml. Drops Contains:**

Kalmegh (कालमेघ)	100 mg.	Vacha (वाच-धीमावज)	50 mg.
Bhumi amalaki (भू-अमलकी)	100 mg.	Jyotishmati (ज्योतिष्मति-नालकान्ठी)	50 mg.
Katuki (कटुकी)	50 mg.	Amruta (अमृता)	100 mg.
Suva (सुवै-सीका)	100 mg.	Balbhadra (बाल-वर्तुमन्त्र)	80 mg.
Ajwan (ओषध-अजवायन)	100 mg.	Trikatu (त्रिकटु)	60 mg.
Jirak (जीराक-जीरा)	100 mg.	Asthishrukhala (अस्थिशुखला)	100 mg.
Bhrahmi (ब्राह्मी)	100 mg.	Sajad (साजद)	100 mg.
Shankpushpi (शंख-पुष्पी)	100 mg.	Vidang (विडंग)	100 mg.
		Suvarna lavan (सुवर्ण-लवण)	18 mg.

## Indication :

- Stomach disorder  
e.g. Indigestion
- Dysentery
- Indian Sprue
- Acidity
- Abdomen Pain
- Recurrence Disease

# Vitamax TABLET

Calcium, Vitamins & Iron deficiency

## विटामेक्ष

पाण्डु, शारीरिक थकान, विटामिनकी कमी आदि में उपयोगी



### Each coated tablet contains :

Saptamarut Loha Powder	(सप्तामृत लोहा पावडर)	124.94 mg
Praval Bhasma	(प्रवाल भस्म)	100 mg
Suvarna Makshik Bhasma	(सुवर्ण माक्षिक भस्म)	125 mg
Guduchi	(गुडुची)	75 mg
Shatavari	(सतावरी)	75 mg
Brahmi Swarasa	(ब्राह्मी स्वरस)	Q.S.

### Indication :

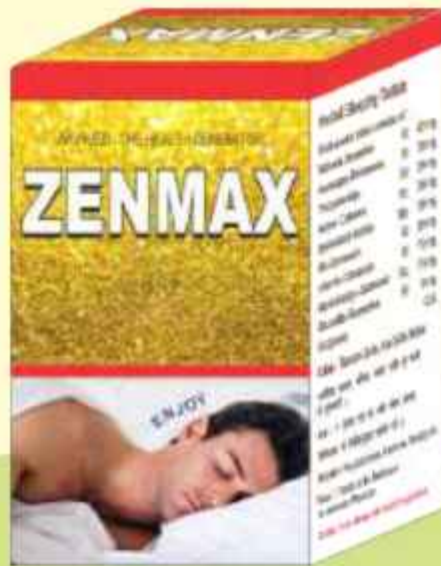
- Helpful in Anemia
- Calcium deficiency
- Vitamin deficiency
- Iron deficiency

# ZENMAX TABLET

Solution of Insomnia

## झेनमेक्स टेब्लेट

अनिद्रा का समाधान



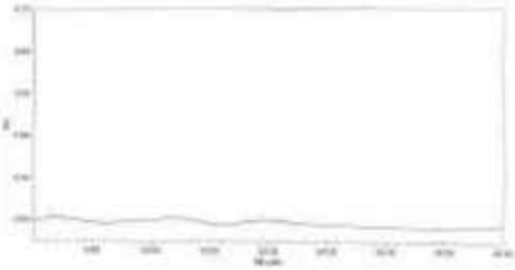
Ashwagandha	(अश्वगंधा)	62 mg.	Pushkarmula	(पुष्करमूला)	30 mg.
Shatavari	(सतावरी)	30 mg.	Tagar	(तगर)	15 mg.
Khuresani Ajwayan	(खुरेसानी अजवायन)	30 mg.	Jatamansi	(जटामांसी)	15 mg.
Vaccha	(वचा)	30 mg.	Sarpagandha	(सर्पगंधा)	8 mg.
Brahmi	(ब्राह्मी)	30 mg.			

### Indication :

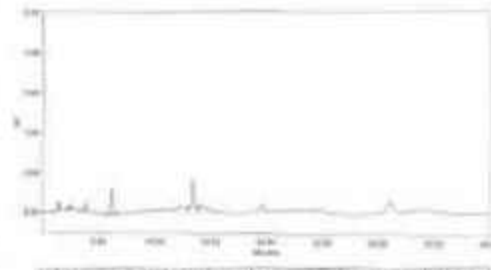
- Insomnia
- Anxiety
- Physical and Mental Stress

### Assay of Sennoside in Samay churna by HPLC

Sample Name : Sennoside\_Blank

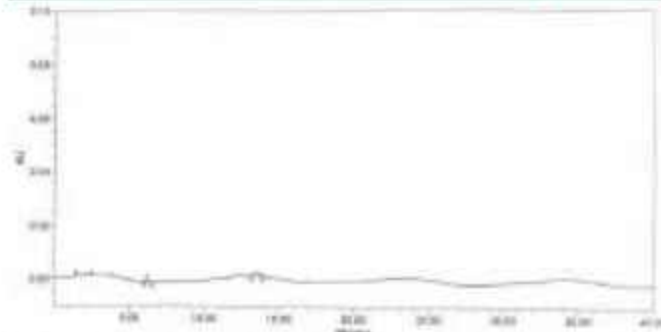


Sample Name : Sennoside\_Standard



Peak Name	RT	Area	% Area	USP Plate Count	USP Resolution	USP Tailing
Sennoside-B	0.10	22882	92.76	8811		1.36
Sennoside-A	13.54	22821	87.24	12182	14.10	1.88

Sample Name : Shree Shanker Samay Churna



Peak Name	RT	Area	% Area	USP Plate Count	USP Resolution	USP Tailing
Sennoside-B	0.10	21942	47.82	8942		1.35
Sennoside-A	13.54	22821	82.38	4544	14.10	0.88

### Calculations

Analysis Results																	
Serial No.	Batch No.	Spec. No.	Lot No.	Exp. Date	Test Date	Test Time	Test Location	Tested By	Checked By								
1	100000	100000	100000	100000	100000	100000	100000	100000	100000								
<table border="1"> <thead> <tr> <th>Sl. No.</th> <th>Test Parameter</th> <th>Result</th> <th>Specification</th> </tr> </thead> <tbody> <tr> <td>1</td> <td>Assay of Sennoside by HPLC</td> <td>2.70 %</td> <td>2.70 %</td> </tr> </tbody> </table>										Sl. No.	Test Parameter	Result	Specification	1	Assay of Sennoside by HPLC	2.70 %	2.70 %
Sl. No.	Test Parameter	Result	Specification														
1	Assay of Sennoside by HPLC	2.70 %	2.70 %														

### Analysis Results

Sl. No.	Test Parameter	Result	Specification
1	Assay of Sennoside by HPLC	2.70 %	2.70 %



**COMPLETELY SAFE & NON-HABITUAL**



**SHREE SHANKER**  
Ayurvedic pharmacy



Plot No. 87, Changodar Ind. Estate, Sarkhej Bavla Road,  
Post : Changodar, Ta. Sanand, Dist.: Ahmedabad-382210  
Mo. No.: 9428500538, 94094 20783, 96625 99500

samaychurna@yahoo.com / www.shreeshankarayurvedicpharmacy.com

## Description

Following the basic principles of Ayurved has been the tradition and culture of **Shree Shanker Ayurvedic Pharmacy**.

If any person is unhealthy and become sick, then how can he get healthy & recover soon is the main goal of **Shree Shanker Ayurvedic Pharmacy**.

In today's lifestyle physical-mental stress, aggressiveness, anxiety, insomnia, irregular eating, overload of work, late night parties, sleeping late at night, intake of junk food, fast food, strange spicy diet etc. cause many body problems and many diseases arise due to poor digestion power.

Ayurvedic ingredients such as Sonaumkhi, Ajwain, Sowa, Black salt have been combined in **Shree Shanker Samay Churna & Tablet** which helps to stimulate poor digestion power and also regularizing the stools and problems like Chronic Constipation, Gas, Acidity, Headache, Sour bleaching, Heaviness in stomach, Piles etc.

This formulation has been made after the research & clinically experienced by famous Vaidya of Gujarat **Late shree Vaidya Ramanlal Agnihotri**.

**Shree Shanker Samay Churna & Tablet** has been manufactured with a combination of Ayurvedic herbal ingredients. It is a formula which has been proved to be completely safe and effective in many disease mentioned above by stimulating the digestion power.

**“DEMANDS OF TODAYS TIME  
SHREE SHANKER SAMAY CHURNA / TABLETS”**

## INGRIDIENTS & DOSAGE

SHREE SHANKER SAMAY CHURNA	SHREE SHANKER SAMAY TABLET
SONAMUKHI AJWAIN SOWA BLACK SALT	SONAMUKHI AJWAIN SOWA HARITAKI (HARADE) SHU.BRUHADANTI TRIVRUT INDRAVARNAMOOL

### DOSAGE:

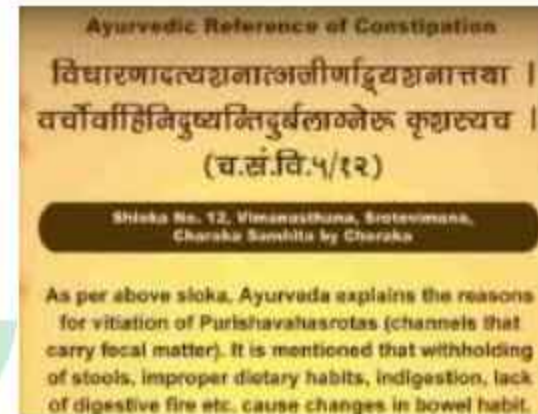
#### SHREE SHANKER SAMAY CHURNA :

1 or 2 table spoon at bed time with warm water as directed by physician

#### SHREE SHANKER SAMAY TABLET:

1 tablet at bed time with luke warm water or as directed by physician

## What is Constipation ?



## Symptoms of Constipation

- Hard and dry stools
- Difficulty in passing feces
- Pain during defecation
- Abdominal pain
- Less than three defecations in a week



Sonamukhi



Haritaki



Ajwain



Trivrut



**SHREE SHANKER**  
Ayurvedic pharmacy

Ayurved - The Health Generator



All the formulations at Shree Shanker Ayurvedic Pharmacy find their roots in classical Ayurvedic texts. A team of botanists and Ayurved Experts at our R&D Center review these scholarly texts and shortlist suitable formulations for further research. In Ayurved, Churna is one of the oldest category which has been prescribed for spontaneous action. Recently in our research we find that now a days many people especially teen age face a difficulties for swallowing the churnas, even many Vaidya's are also not prescribing the Churna(Powders) to the patients due to intake swallow problem, So our Expert R&D team has started working to resolve the problems of Vaidya's as well as for Patients and with our keen research we have Converted Classical Churna's with equivalent dosage in a Tablet form with same Spontaneous Action.







## ASTHISHRUNKHLA TABLET

**Bone Healing  
Activity**

### INDICATION

Asthishrunkhla (hadjod) enhance the rate of fracture healing. Asthishrunkhla has anti-inflammatory, anti-osteoporactic, anti-hemorrhoids properties. Use in fracture pain.



## AJMODADI TABLET

**Carminative and Anti-spasmodic  
Activity**

### INDICATION

Ajmodadi tablet is a polyherbal ayurvedic medicine used as carminative and antispasmodic, has strong vermifuge and helps in all painful conditions like sciatica, rheumatoid arthritis and stiffness in back and also restores normal digestive functions also used in diarrhea.



## BAHEDA TABLET

**Anti-Allergic & Anti-Tussives  
Activity**

### INDICATION

Baheda is beneficial in relieving cough and cold symptoms due to its antimicrobial and anti-allergic properties. Taking Baheda tablet along with honey helps relieve cough as it improves immune health. Baheda tablet also helps in weight loss as it improves metabolism and reduces ama by increasing the digestive fire. It is also beneficial for skin problems such as acne and acne scars due to its anti-bacterial property.



## BILVADI TABLET

**Digestive and Stomachic  
Activity**

### INDICATION

Bilvadi tablet cures upset stomach, diarrhea and dysentery. Its herbal properties eliminate harmful micro-organisms from your digestive tract, facilitates normal absorption of nutrients in intestines and stimulates digestive enzymes which aid in digestion. Bilvadi tablet has cooling effect on stomach and eases abdominal pain and discomfort immediately.



**SHREE SHANKER**  
Ayurvedic pharmacy



## CHAUSATH PRAHARI PIPPAR TABLET

**Digestive & Anti-Tussives  
Activity**

### INDICATION

Chausath prahari pippar tablet is useful in cough, asthma, respiratory diseases, digestive impairment, low appetite, hyperacidity, hiccups, anemia, piles, pain etc. It has various other properties like anti-inflammatory, cough suppressor, antibacterial, insecticidal, antimalarial, CNS stimulant, antitubercular, anti-helminthic, hypoglycaemic, antispasmodic, antiangiinal, immunomodulatory, hepatoprotective, analgesic, antinarcotic, anticarcinogenic activity.



## GOKSHUR TABLET

**Diuretic & Anti-Inflammatory  
Activity**

### INDICATION

Gokshura tablet is mainly used in treatment of asthma, edema, cough, and renal problems, as well as to aid with hair loss, rheumatic pain, headache/stress, menstruation, weak nervous system, obesity, piles, and eye.



## HARIDRA (TURMERIC) TABLET

**Anti-Allergic  
Activity**

### INDICATION

Haridra protects skin from allergy and infections.

Haridra has anti-diabetic, anti-asthmatic, anti-inflammatory properties.

It can be used in dry as well as in wet coughing.



## HINGVASHTAK TABLET

**Carminative and Antispasmodic  
Activity**

### INDICATION

Hingvashtak tablet is a polyherbal based ayurvedic medicine used as a digestive aid as it helps in the removal of all digestive disorders, by acting as a carminative and antispasmodic. It is a strong vermifuge, and helps in the treatment of all painful conditions like sciatica and stiffness in back.



**SHREE SHANKER**  
Ayurvedic pharmacy



## JAMBUBEEJ TABLET

Antidiabetic  
Activity

### INDICATION

Jambu beej tablet is mainly used in the treatment of diabetes, blisters in mouth, cancer, colic, diarrhea, digestive complaints, dysentery, piles, pimples and stomachache etc.



## JATAMANSI TABLET

Antidepressant & Anticonvulsant  
Activity

### INDICATION

It is used as a good stimulant, antispasmodic, tonic, laxative and antiepileptic. **Jatamansi** has been traditionally used in treatment of wide range of disorders, which include digestive system, circulatory system, nervous system, respiratory system, urinary system, reproductive system and skin diseases.



## KARIYATU (CHIRAYATA) TABLET

Anti-Pyretic  
Activity

### INDICATION

Chirayata contains liver-protecting properties. It eliminates toxins from the body and also facilitates the growth of new liver cells. Chirayata has antibacterial, antifungal, antipyretic, anti-inflammatory and anticancer properties. It also cure fever, cough, asthma, pain, common cold, and weakness.



## KAUNCHA TABLET

Antioxidant & Neuroprotective  
Activity

### INDICATION

Kaunch beej tablet helps to increase sexual desire as well as the quality and quantity of sperm due to its aphrodisiac property. It also helps in the management of nervous disorders like parkinson's diseases and controls the symptoms of arthritis. The most effective way of consuming **kaunch** beej tablet is with milk.



**SHREE SHANKER**  
Ayurvedic pharmacy



## LAVAN BHASKAR TABLET

**Digestive and Stomachic  
Activity**

### INDICATION

Lavan bhaskar churna is an ancient ayurvedic medicine which is indicated in stomach gases, flatulence, indigestion, piles, dyspepsia, loss of appetite and constipation.



## MORINGA (SHIGRU) TABLET

**Anti-Inflammatory & Analgesic  
Activity**

### INDICATION

Shigru is widely used as nutritional herb and contains valuable pharmacological action like anti-asthmatic, anti-diabetic, hepatoprotective, anti-inflammatory, anti-fertility, anti-cancer, anti-microbial, anti-oxidant, cardiovascular, anti-ulcer, CNS activity, anti-allergic, wound healing and analgesic etc. It is also used in different pain management



## NAGKESAR TABLET

**Antimicrobial & Bleeding disorder  
Activity**

### INDICATION

It is a powerful medicine to treat ailments such as leucorrhoea, bronchitis, bleeding, migraines, and gastrointestinal and urinary tract disorders.



## PIPPALIMOOL TABLET

**Anti-Asthmatic &  
Anti-inflammatory Activity**

### INDICATION

Pippali mool tablet helps to relieve inflammations, edema, and restores the structures of the body to normalcy, improves appetite, and relieves flatulence. Pippali mool tablets supports proper bile function & stimulates it to maintain healthy liver functions. It also promotes relaxation of body tissues & calms the nerve. It is also used to prevent cough, cold, asthma, bronchitis etc.



**SHREE SHANKER**  
Ayurvedic pharmacy



## PUNARNAVA TABLET

**Anti-Inflammatory  
Activity**

### INDICATION

Punarnava tablet before meals might help manage stomach disorders such as constipation by promoting bowel movements due to its laxative property. It also provides relief from gas and abdominal pain.  
Punarnava tablet also helps to increase urine production due to its diuretic activity and reduces the risk of urinary complications. It might also be useful for managing liver problems due to its anti-oxidant activity which prevents liver cell damage caused by free radicals.



## PUSHYANUG TABLET

**Antifibrinolytic  
Activity**

### INDICATION

Pushyanug churna is a herbal ayurvedic medicine commonly used in the treatment of all menstrual disorders such as excessive bleeding, painful periods, mid-cycle bleeding, leucorrhoea (shwetpradar), menorrhagia (asrigdhara), metrorrhagia and heavy bleeding before menopause.



## SHIVAKSHAR PACHAN TABLET

**Digestive & Carminative  
Activity**

### INDICATION

It has carminative action and is useful in flatulence. It has laxative action and is useful in cases of constipation. It is used in treatment of liver complications, anorexia, and abdominal pain due to gaseous distention. It is indicated for indigestion, anorexia, constipation and pain in abdomen.



## SHRINGYADI TABLET

**Anti-Inflammatory &  
Bronchodilator Activity**

### INDICATION

Shringyadi churana is recommended in acute & chronic cough & cold, fever, bronchitis and anorexia etc. This is a ayurvedic herbal medicines that might be also useful in cough fever and vomiting in children.



**SHREE SHANKER**  
Ayurvedic pharmacy



## SWADISHT VIRECHAN TABLET

Laxative  
Activity

### INDICATION

Swadisht virechan tablet is beneficial in constipation, abdominal pain, gastric issues, etc. active ingredients like seena leaves enable proper excretion by stimulating colon muscles. Mulethi in it is known for treating a range of digestive problems - acid reflux, heartburn, hyperacidity, etc.



## TRIKATU TABLET

Digestive & Anti-asthmatic  
Activity

### INDICATION

Trikatu tablet is an age-old ayurvedic remedy that is extensively used for treating umpteen health problems including indigestion, gastritis, constipation, obesity, asthma, cough and cold, arthritis, infections, ulcers, etc.



## TULSI TABLET

Anti-Bacterial & Anti Fungal  
Activity

### INDICATION

Tulsi is well known for its myriad medicinal properties antibacterial, antifungal, antipyretic, antioxidant, antiseptic and anticancer. Tulsi also act on the immune system to modify immune response. It also reduce the symptoms of fever, pain and swelling in an inflammatory response.



## JAV (WHEATGRASS) TABLET

Antioxidant & Detoxifying  
Activity

### INDICATION

Wheatgrass helps to boost energy levels in the body. It has detoxifying properties that maintain the digestive functioning of the gut. High chlorophyll content in wheatgrass has anti-bacterial properties that can be helpful in the prevention of pimples, soothing eczema, psoriasis, and other skin conditions. Wheatgrass carries properties such as anti-diabetic, anti-allergic, antioxidant, antiulcer, anticancer, hepatoprotective, cardio protective, anti-inflammatory, and antiarthritic properties. This tablet is recommended for those who intend to lose weight healthily.

Address: Plot No. 87, Changodar Ind. Estate, Post: Changodar, Ta. Sanand, Dist.: Ahmedabad-382210. (Gujarat)  
Customer Care No.: 07069554034, Time 10 A.M. to 4 P.M.  
Customer Care Email: shanker.pharmacy42@yahoo.com Website: www.shreeshankarayurvedicpharmacy.com



**SHREE SHANKER**  
Ayurvedic pharmacy

